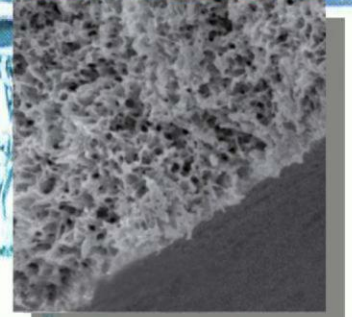


High Flux

Ease Cleaning

Long Service Life



Hollow fiber membrane is made of polymer materials and using a special technology to process the asymmetric membrane. It is hollow capillary with porous surface.

Material : PS / PVDF

Working pressure :  $\leq 0.15\text{MPa}$

Working temperature :  $\leq 45\text{ }^\circ\text{C}$

PH value : 2 ~ 13

Inlet water quality : Turbidity  $\leq 2\text{mg / L}$

### Application Of Ultrafiltration Technology

Hollow fiber membrane is widely used in electronic plant, food industry, Pharmaceutical, petrol chemical , seawater, desalination and so on.





## ( MBR ) Membrane Bioreactor



Membrane Bioreactor combines activated sludge ( Biological degradation process ) and physical separation process ( SS removal )  
In removing biodegradable organics, SS and inorganic nutrients ( BOD, COD, Amonical Nitrogen )

## Hydronium Exchange Equipment



### Application

- Softener System
- Anion Exchanger
- Cation Exchanger
- Demineralization Plant







# Reverse Osmosis Nanofiltration



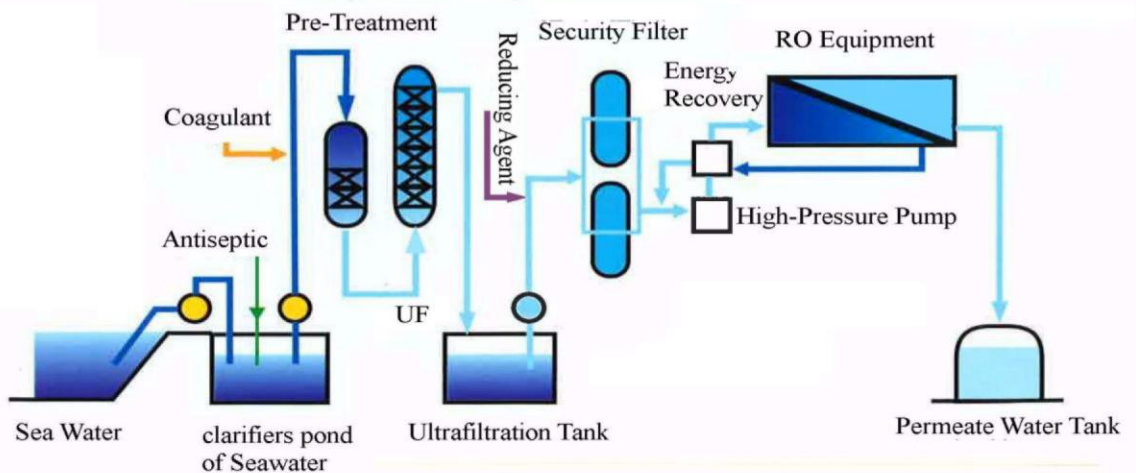
THAGO RO membrane has low energy consumption, no pollution, simple operation, reliable operation and so on. Widely used in seawater, brackish water and boiler feed water.

Nanofiltration is mainly used for brackish water softening, desalination; food concentration and separation; drinking water mainly trihalomethanes removal, odor, color, pesticides, dissolved organic matter, such as hardness components and evaporation residue.

## Desalination



## Desalination Process Flow Diagram

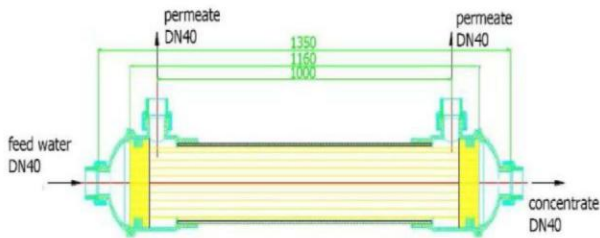


Membrane Specification	D160-PS UF	D225-PS UF
------------------------	------------	------------

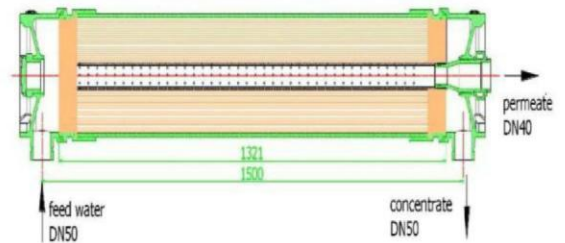
1	Configuration	Hollow Fiber ( Inside Out )	Hollow Fiber ( Inside Out )
2	Material	PS	PS
3	Surface Area	20m <sup>2</sup>	40m <sup>2</sup>
4	Cut Off Molecule Weight	67,000 dal	67,000 dal
5	Housing Material	uPVC	uPVC
6	Cartridge Housing ( mm )	Dia. 160mm x 1,350mm (L)	Dia. 225mm x 1,500mm (L)
7	Operation Temperature	< 45°C	< 45°C
8	Flux L/m <sup>2</sup>	40 --- 80	40 --- 80
9	Operation Pressure ( TMP )	< 1.0 bar ( Feed ) < 1.5 bar ( Backflush )	< 1.0 bar ( Feed ) < 1.5 bar ( Backflush )
10	Weight	25 kg	65 kg
11	Dia. Of Hollow Fiber ( I/O )	1.0 / 1.5mm	1.0 / 1.5mm
12	PH Range	1 --- 13	1 --- 13
13	Backwash Flux	80 - 120 L/m <sup>2</sup> /h	80 - 120 L/m <sup>2</sup> /h

Operation Process	
Filtration ( In To Out )	Cross Flow
Regeneration ( Out To In )	Backflushing

D160-PS UF



D225-PS UF



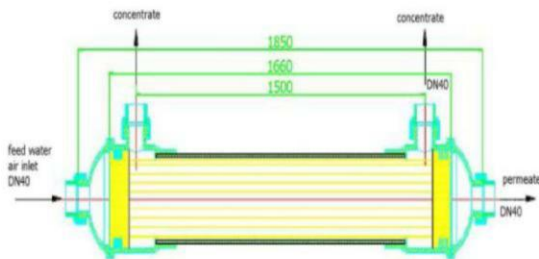
Membrane Specification	D160-PVDF UF	D225-PVDF UF
------------------------	--------------	--------------

1	Configuration	Hollow Fiber ( Outside In )	Hollow Fiber ( Outside In )
2	Material	PVDF	PVDF
3	Surface Area	40m <sup>2</sup>	60m <sup>2</sup>
4	Housing Material	uPVC	uPVC
5	Cartridge Housing ( mm )	Dia. 160mm x 1,350mm (L)	Dia. 225mm x 1,500mm (L)
6	Operation Temperature	< 45°c	< 45°c
7	Flux L/m <sup>2</sup>	50 --- 100	50 --- 100
8	Operation Pressure ( TMP )	< 1.0 bar ( Feed ) < 1.5 bar ( Backflush )	< 1.0 bar ( Feed ) < 1.5 bar ( Backflush )
9	Weight	25 kg	65 kg
10	Dia. Of Hollow Fiber ( I/O )	10.7 / 1.2mm	1.0 / 1.5mm
11	PH Range	1 --- 12	1 --- 13
12	Backwash Flux	80 - 120 L/m <sup>2</sup> /h	80 - 120 L/m <sup>2</sup> /h

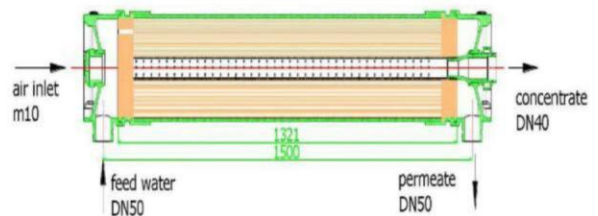
#### Operation Process

Filtration ( Out To In )	Cross Flow
Regenetation ( In To Out )	Backflushing

#### D160-PVDF UF



#### D225-PVDF UF







# THAGO



# THAGO

**THAGO (M) SDN BHD** (1099545-T)

No.27, Jalan Mutiara Emas 5/26, Taman Mount Austin, 81100 Johor Bahru, Johor, Malaysia.

Tel : +607-3555210 Fax :1700813605 Email : thago@thago.net

**SS THAGO (M) SDN BHD** (925083-A)

3-GF & 1F, Bandar Letat Jaya, Lrg Letat Jaya 6, Block J, Mile 3 1/2, 90000 Sandakan, Sabah, Malaysia

Tel : +6089-222844 Fax : +6089-211844 Email : thagosb@thago.net



[www.thago.net](http://www.thago.net)