

SLUDGE DEWATERING PRESS



INTRODUCTION

The Sludge Dewatering Machine integrates with sludge thickening, dewatering screw press and automatic control system. High efficiency flocculation and solid removal processes are running continuously under a single machine. The discharge liquids either transfer back to the pond or undergo a filtration treatment as recycle water.

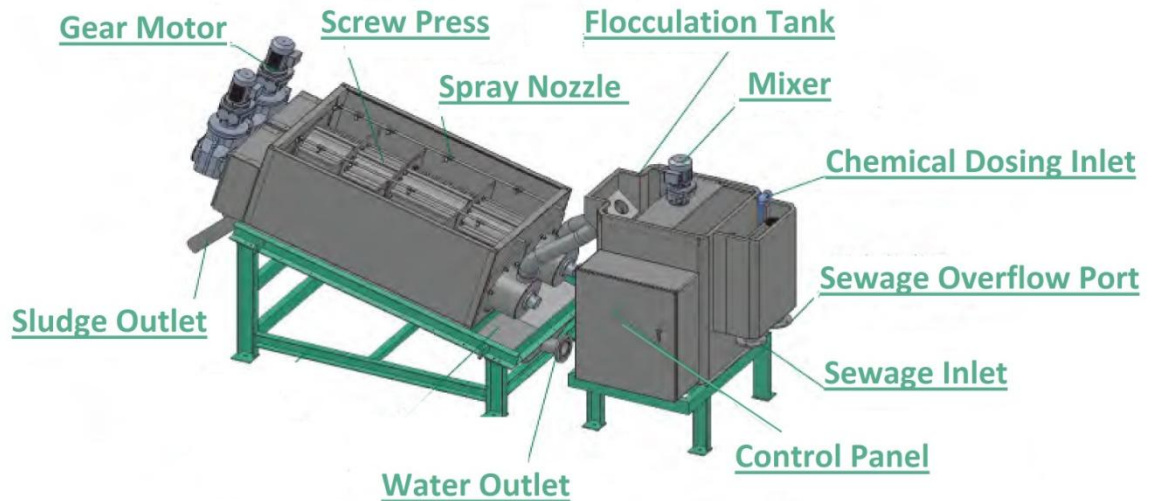


Figure 1: Parts of Sludge Dewatering Machine

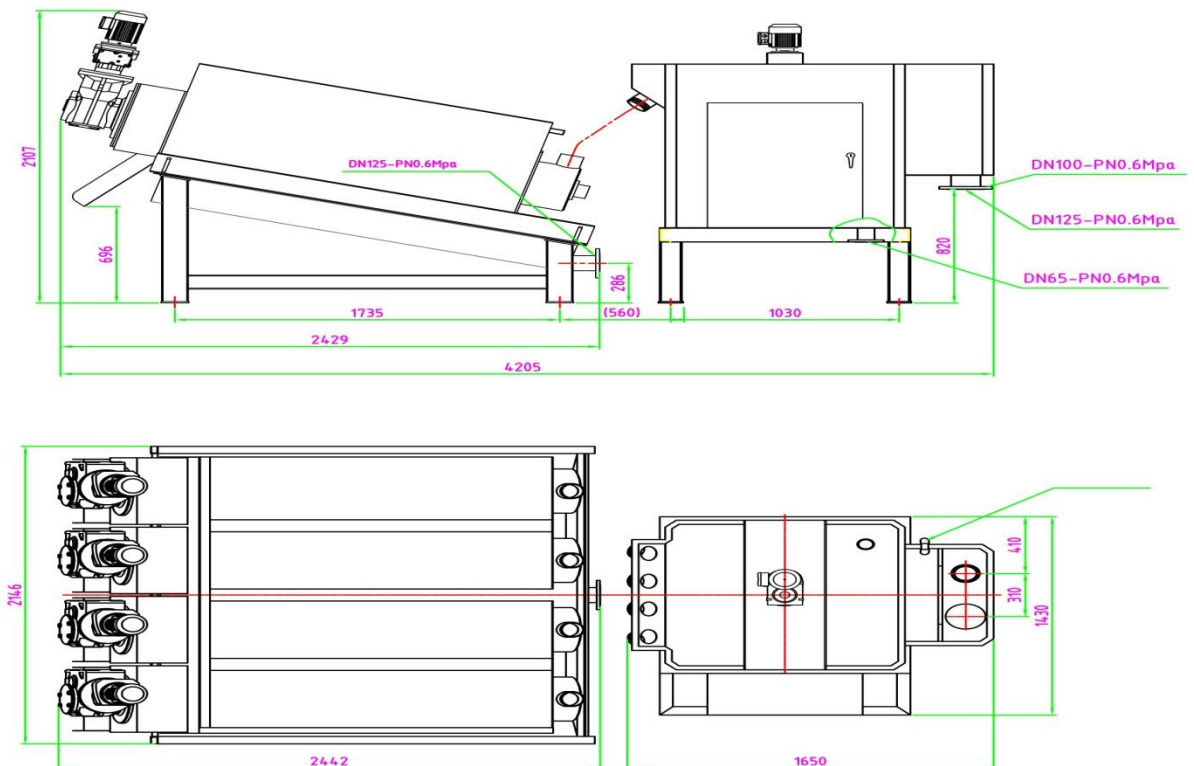


Figure 2: Technical Drawing

Key Features:-

- Simple system, low investment and low power consumption.
- Programmable system to allow friendly and high efficiency operation.
- Economy & Unique flocculation process.

Working Principle

1. Pumping high solid content slurry into the flocculation tank continuously to ensure a rapid mixing with the coagulant.
2. Pushing the slurry into the screw press and the gaps between the screw blades getting narrower. Gradually pressure imposed on the sludge and dewatering process is occurred as a result of the differential pressure and the movement of the rings.
3. Automatic spray system is a self cleaning device to avoid the blockage within the fixes/moving plates.
4. Sludge cakes are transferred to the outlet of the machine.

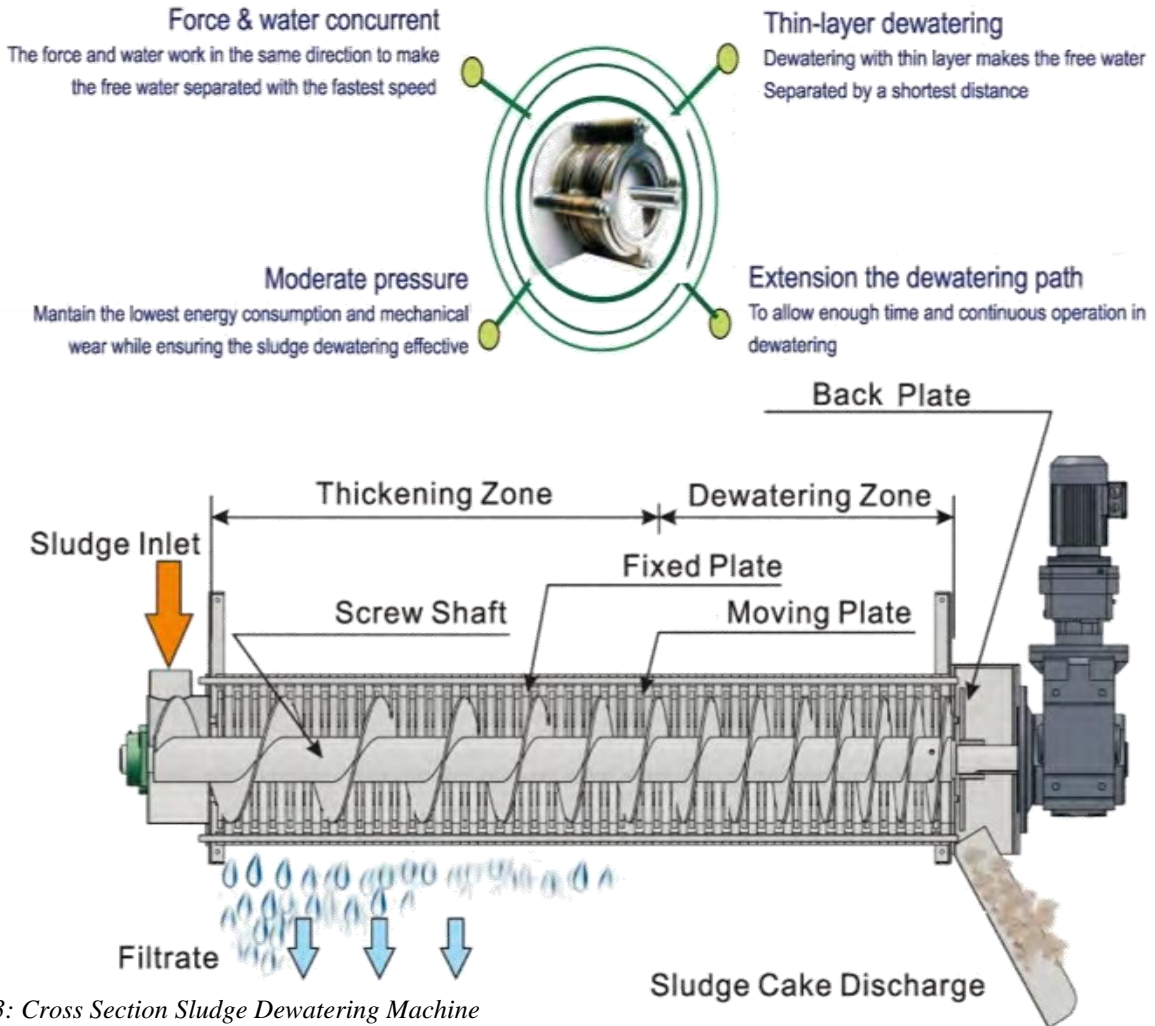


Figure 3: Cross Section Sludge Dewatering Machine

Flow chart

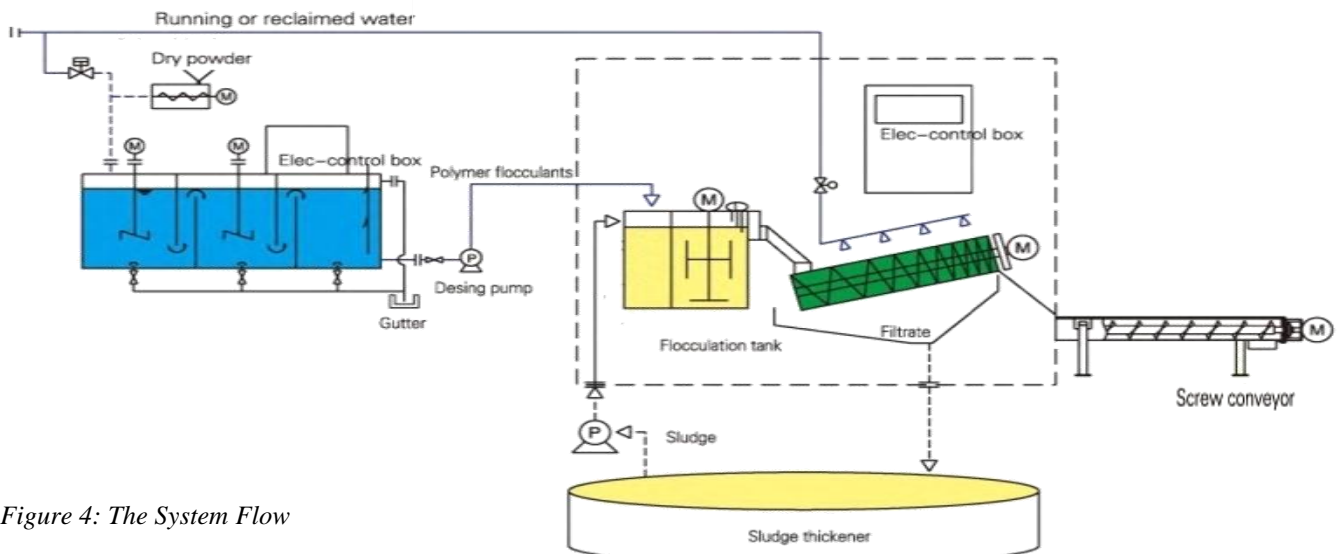
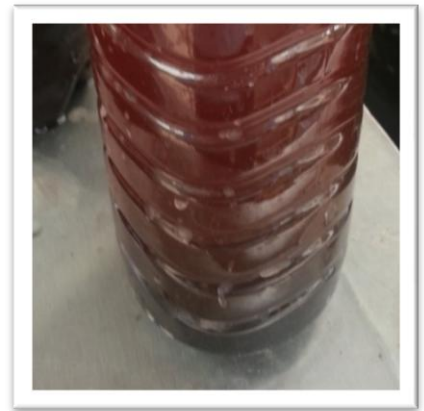
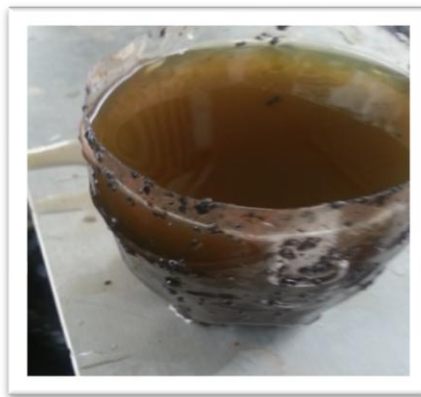
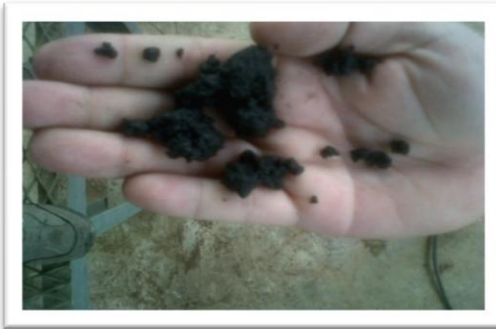
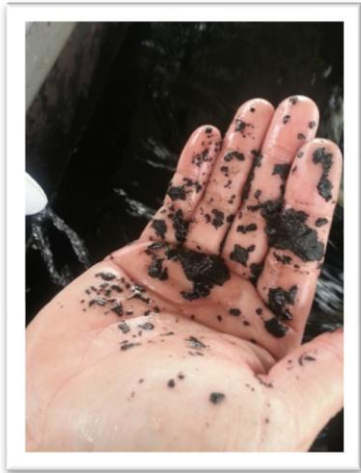


Figure 4: The System Flow



THAGO HQ

G-37 , Jalan Mutiara Emas 9/5 ,
Taman Austin Boulevard ,
81100 Johor ,
Johor bahru , Malaysia.
Tel : +607-3642001
Fax : +607-3523116
Email : thago@thago.net

THAGO
THAGO (M) SDN BHD
www.thago.net

THAGO SABAH

3-GF & 1F , Bandar Letat Jaya,
Lrg Letat Jaya 6 , Block J,
Mile 3 1/2 , 90000 Sandakan ,
Sabah , Malaysia
Tel : +6089-222844
Fax : +6089-211844
Email : thagosb@thago.net